

## Editorial Board

**Rachel Barney**  
University of Toronto

**Robert Bernasconi**  
Pennsylvania State University

**William Blattner**  
Georgetown University

**Tina Chanter**  
DePaul University

**Tamar Szabó Gendler**  
Yale University

**A. C. Genova**  
University of Kansas

**Hannah Ginsborg**  
University of California, Berkeley

**Sandy Goldberg**  
Northwestern University

**David Henderson**  
University of Nebraska

**Terry Horgan**  
University of Arizona

**Len Lawlor**  
Pennsylvania State University

**Catherine Malabou**  
Université Paris X - Nanterre

**Linda Martín-Alcoff**  
Hunter College, CUNY

**Christopher Pincock**  
Purdue University

**Tad Schmaltz**  
Duke University

**Alan Schrift**  
Grinnell College

**Tommy Shelby**  
Harvard University

**David Shoemaker**  
Tulane University

**Paul Snowdon**  
University College London

**Amie Thomasson**  
University of Miami

**John Tienson**  
University of Memphis

**Mark Timmons**  
University of Arizona

**Rebecca Walker**  
University of North Carolina

**Alison Wylie**  
University of Washington

**Gideon Yaffe**  
University of Southern California

**Jack Zupko**  
Emory University

Support *The Southern Journal of Philosophy*

Please consider supporting the *SJP* and the philosophical community at the University of Memphis by making a donation to one of the following funds:

## Nancy Simco Speaker Series Fund

Professor Nancy Simco served as Editor of *The Southern Journal of Philosophy* for thirty-four years and as Chair of the Department of Philosophy for nineteen years. Upon her retirement, the faculty established a speaker series fund to honor her commitment to undergraduate and graduate education. This fund provides the resources to bring some of the most distinguished thinkers from this country and abroad to the University of Memphis.

Each Simco Lecture will be published in *The Southern Journal of Philosophy*.

To make a donation to either of these funds, please visit the following website:

<http://www.memphis.edu/giving>

Be sure to specify that your donation should be directed to either the *Nancy Simco Speaker Series Fund* or the *Spindel Fund*. Thank you for your support!

## Spindel Fund

A successful Memphis businessman, Murray Spindel, was a dedicated philosopher who often took courses at the University of Memphis. In 1981, Murray endowed the Spindel Fund which supports both an annual philosophy conference and a dissertation fellowship. Since his death in 1999, Murray's wife, Chris, has continued the Spindel family's support of the department.

The Spindel Conference brings to campus each fall the highest caliber of philosophers from around the world, and the proceedings are published annually as the Spindel Supplement to *The Southern Journal of Philosophy*. The Spindel Conference is both a scholarly and social event and has come to define what is best about philosophy in Memphis and what Murray Spindel loved most: the friendly, but lively and engaging pursuit of truth.



ISSUE

01

APRIL  
2010NEWSLETTER  
OF THE  
SOUTHERN  
JOURNAL OF  
PHILOSOPHY

SJPnews

Volume 48  
Issue 1  
March 2010

## STEPHAN BLATTI

Editor's Introduction

## NANCY SIMCO

A History of *The Southern Journal of Philosophy*

## PAUL SNOWDON

On the What-It-Is-Like-ness of Experience

## TAD SCHMALTZ

Malebranche and Leibniz on the Best of All Possible Worlds

## ROBERT BERNASCONI

Race and Earth in Heidegger's Thinking During the Late 1930s

## TERRY HORGAN

Transvaluationism about Vagueness: A Progress Report

## RACHEL BARNEY

Gorgias' Defense: Plato and His Opponents on Rhetoric and the Good

## LINDA MARTÍN ALCOFF

Sotomayor's Reasoning

## SJP ANNOUNCEMENTS

WILEY-  
BLACKWELL

## Transition to Wiley-Blackwell Complete

After nearly a half-century of self-publication and eighteen months of preparation, *The Southern Journal of Philosophy* is going pro! Beginning with the first issue of 2010, the *SJP* will appear under the imprint of our new publisher, Wiley-Blackwell.

Through increased exposure and assorted logistical and cosmetic updates, the partnership with Wiley-Blackwell promises to broaden the appeal and deepen the impact of the work published in the *SJP*. Already, the journal has been given a fresh look, there's a new website, authors and reviewers may now submit their manuscripts and reports via ScholarOne Manuscript's online system, and the journal's back catalogue is readily available. (See pages 2 and 3 for details.)

But while we are pleased to begin this new chapter in our history, the *SJP* remains steadfast in its belief that the arc of philosophical progress bends toward pluralism. This commitment to first-class work undertaken from a diversity of perspectives and methodologies is evident in the composition of our newly established Editorial Board, whose membership reflects a roughly equal distribution of leading ana-

## in this issue

Transition to Wiley-Blackwell 1

Spindel Conference / Essay Prize 2

*SJP* Gets a Facelift 2

Spindel Supplement Preview 3

A. C. Genova (1929-2010) 3

*SJP* Online / *SJP* Subscriptions 3

Editorial Board 4

Support the *SJP* 4

SJPnews

Issue 01

April 2010

Southern  
Journal of  
Philosophy

University of Memphis  
Department of Philosophy  
327 Clement Hall  
Memphis, TN 38152

901.678.2535 phone  
901.687.4265 fax

<http://www.wiley.com/bw/journal.asp?ref=SJP>

THE UNIVERSITY OF  
MEMPHIS

A Tennessee Board of Regents Institution  
An Equal Opportunity • Affirmative Action University

## 29<sup>th</sup> Annual Spindel Conference Empathy and Ethics

This year's Spindel Conference will take place October 7–9, 2010 at the University of Memphis. The keynote speakers will be Stephen Darwall, John Deigh, and Peter Goldie. Other participants include Amy Coplan, Justin D'Arms, Julia Driver, Stephen Finlay, Daniel Jacobson, Jesse Prinz, Robert Roberts, Connie Rosati, Tamar Shapiro, Michael Slote, and Karsten Steuber. The conference director is Remy Debes.

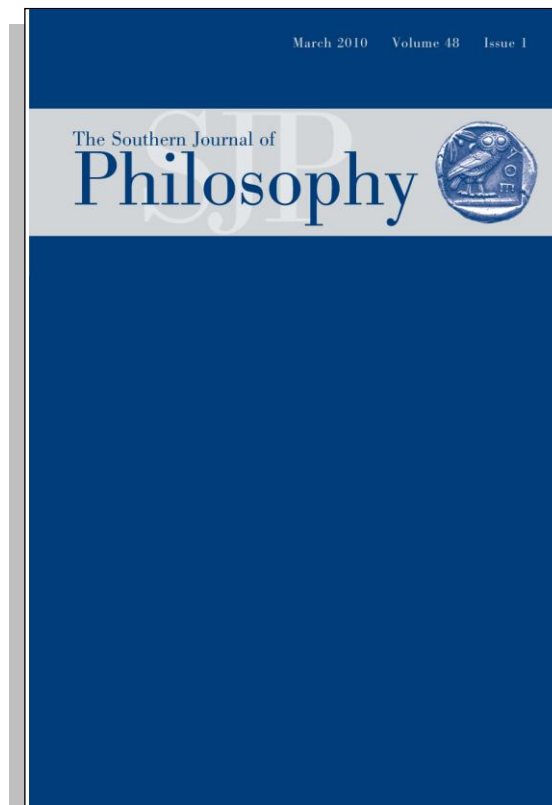
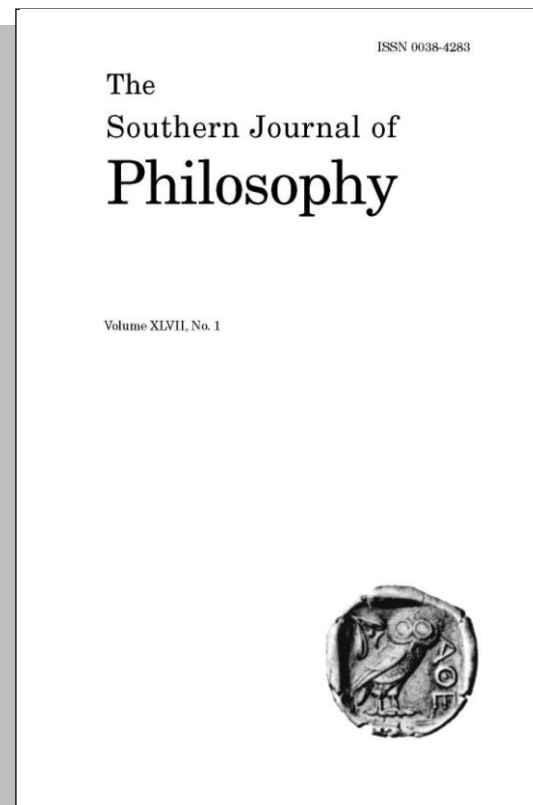
## Call for Submissions Emerging Scholar Prize Essay

The Emerging Scholar Prize Essay will be delivered at a special breakfast session preceding the regular Friday sessions. The essay will be considered for publication alongside regular conference proceedings in the annual Spindel Supplement to *The Southern Journal of Philosophy*. The winning author will receive a prize in the amount of \$250. The top runner-up will be asked to chair the breakfast session, and all finalists will be invited to prepare a poster, to be displayed throughout the conference weekend.

The Emerging Scholar Prize Essay will be competitively selected. Authors must be either currently enrolled in a graduate program or within six years of completing the Ph.D. Submitted essays should contain original research related to the subject of "Empathy and Ethics" (broadly construed).

Essays must not exceed 3500 words and must be prepared for blind review with a separate cover sheet that includes word count, author affiliation, and contact information. Submissions should be sent via electronic attachment (in Word or PDF) to Remy Debes (rdebes@memphis.edu).

The deadline for submissions is June 1, 2010.

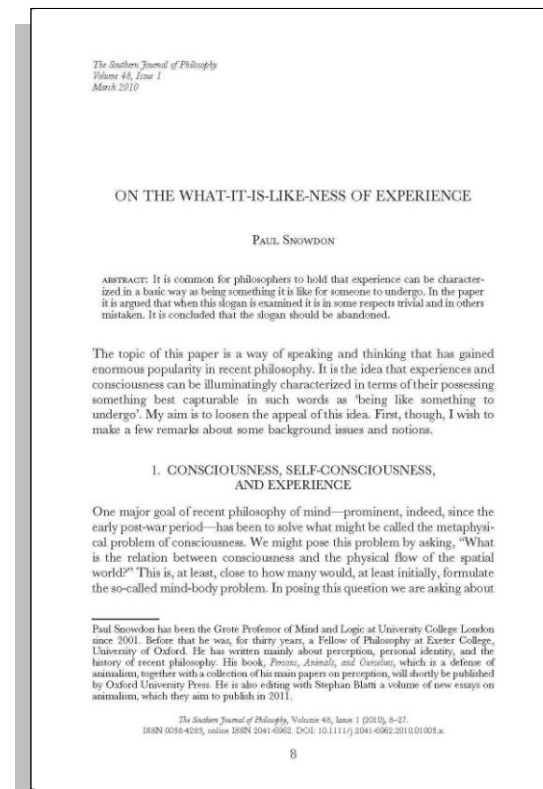


## SJP Gets a Facelift New Look Features Redesigned Cover, Preserves Trademark Elements

Our colleagues at Wiley-Blackwell have given the *SJP* quite a makeover. Even a superficial glance confirms that nothing has escaped the designers' attention: front cover, back cover, branding, fonts, page layout ... You name it, it's been nipped, tucked, burnished, and bedecked.

Despite these updates, however, the spirit of the journal's traditional appearance has been preserved in a number of familiar elements. Most notable is the Owl of Minerva logo which has long graced the *SJP*'s cover and continues to do so.

Happy reading!



## SJP Online

### New Homepage

Be sure to visit our new homepage:

[www.wiley.com/bw/journal.asp?ref=SJP](http://www.wiley.com/bw/journal.asp?ref=SJP)

This is your one-stop-shop for information concerning the journal's Aims & Scope, Submission Guidelines, Upcoming Issues, Calls for Papers, Subscriptions, Announcements, and more.

### ScholarOne Manuscripts

Authors and reviewers may now submit their manuscripts and reports via ScholarOne Manuscript's online system:

<https://mc.manuscriptcentral.com/sjp>

### Back Catalogue

The *SJP*'s entire back catalog (1963–2010)

has been digitized and

is now available on our Wiley

InterScience website:

<http://interscience.wiley.com/journal/sjp>

This catalog includes both regular issues as well as the Spindel Supplements.

## SJP Subscriptions

### Complimentary Subscriptions

Complimentary online access to the *SJP* is available to members of the Editorial Board as well as to all University of Memphis faculty, staff, and students.

### Does Your Library Subscribe to SJP?

Visit the *SJP* homepage and click "Recommend to Library" today!

## Spindel Supplement Preview

### 2009 Conference Topic: *The Sexes of Evolution*

Under the direction of Mary Beth Mader, the 28<sup>th</sup> annual Spindel Conference was held at the University of Memphis on September 24–26, 2009. The topic was *The Sexes of Evolution: Continental Philosophy, Feminist Philosophy, and Evolutionary Theory*. As always, the contributions to the Spindel Conference appear in the Spindel Supplement to the *SJP* the following year.

The central question animating last year's conference was "What can continental Philosophy contribute to our understanding of the feminist issues raised by evolutionary theory,

broadly understood?" As this suggests, Mader sought to facilitate the union of three broad streams of contemporary thought: continental philosophy, feminist philosophy and evolutionary theory.

"It is not uncommon for two of these research streams to meet," Mader explains. "More rare is the confluence of all three."

"The chief aim of the 2009 Spindel Conference is to showcase the contributions of philosophers working at the important and timely junction of all of these philosophical traditions."

These philosophers included both established researchers as well as younger scholars. Contributors include Claire Colebrook (Penn State University), Penelope Deutscher (Northwestern University), Ladelle

"What can continental philosophy contribute to our understanding of the feminist issues raised by evolutionary theory, broadly understood?"

Mary Beth Mader

ter (University of Richmond), Kelly Oliver (Vanderbilt University), and Luciana Parisi (Goldsmiths, University of London).

Watch for the 2010 Spindel Supplement this fall! And be sure to check out past Spindel Supplements via the journal's new website:

[www.wiley.com/bw/journal.asp?ref=SJP](http://www.wiley.com/bw/journal.asp?ref=SJP)

## 2010 Spindel Supplement, ed. Mary Beth Mader Contents

Penelope Deutscher (Northwestern University)

"Women as Biological Threshold: The Future of Turn-of-the-Century German Feminism"

John Nale (Penn State University), Commentator

Ladelle McWhorter (University of Richmond)

"Darwin's Invisible Hand: Feminism, Reprogenetics, and Foucault's Analysis of Neoliberalism"

Bill Wilkerson (University of Alabama, Huntsville), Commentator

Kelly Oliver (Vanderbilt University)

"'Evolution' and New Reproductive Technologies"

Camisha Russell (Penn State University), Commentator

Luciana Parisi (Goldsmiths, University of London)

"Event and Evolution"

Jami Weinstein (Utrecht University), Commentator

Claire Colebrook (Penn State University)

"Extinction, Sex and Creative Evolution"

Nicole Anderson (Macquarie University), Commentator

## Professor A. C. Genova (1929–2010)



Professor A. C. Genova (PhD, University of Chicago) died unexpectedly of natural causes on March 20, 2010.

Tony was a faculty member of the University of Kansas Department of Philosophy and a long-standing friend of the *SJP*. He recently joined the newly established Editorial Board.

A memorial notice is being prepared by his colleagues at the University of Kansas. This notice will appear in an upcoming issue of the *SJP*.